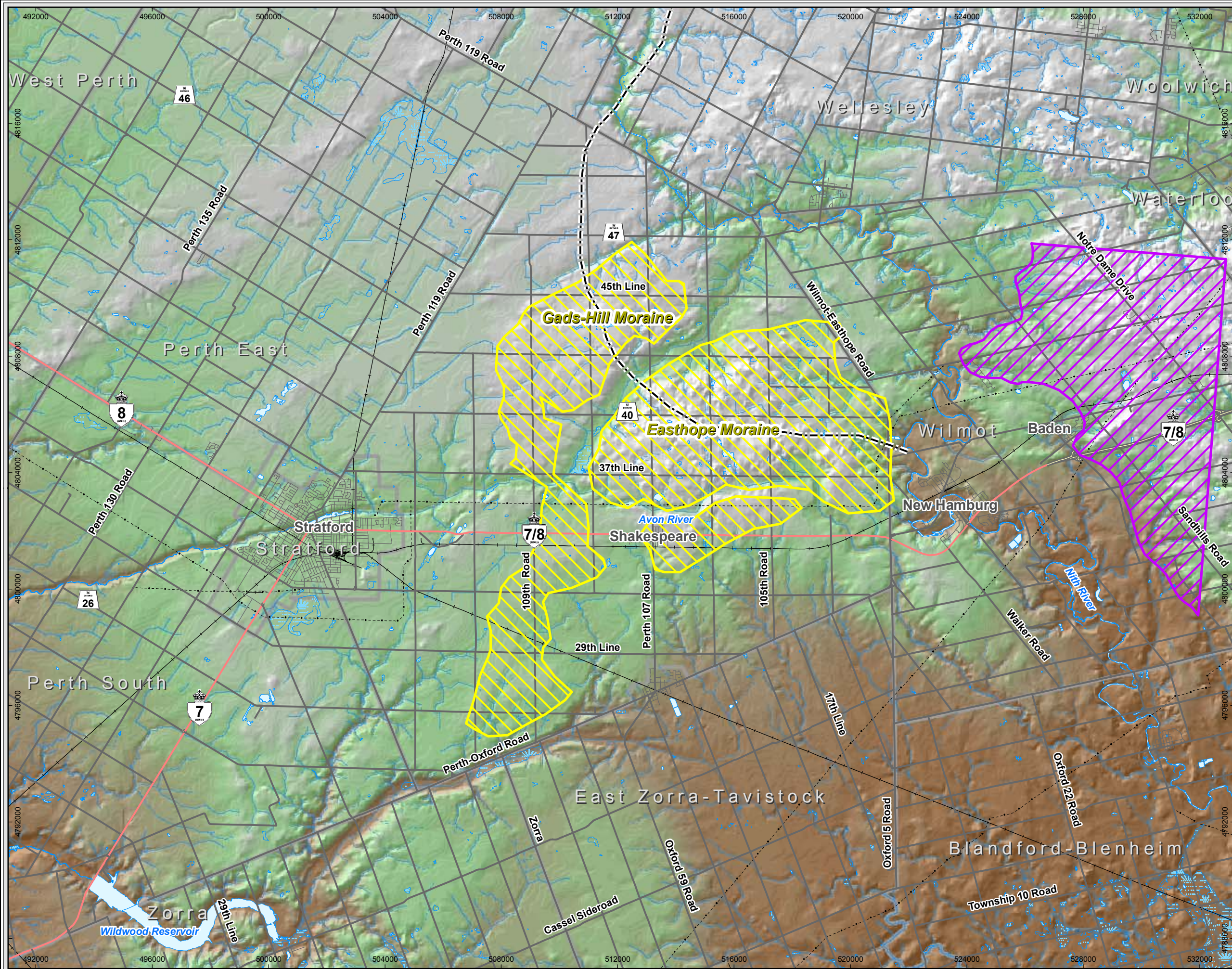


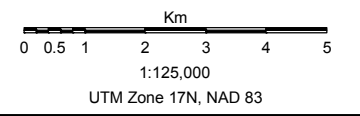
Map Document: (N:\Projects\2007\70347\2008\Final\GIS\Spatial\Map\XDe\Revised\Map8\70347\Physiography-11x17a.mxd)
05/06/2008 - 1:21:07 PM



Legend

- Intermittent Stream
 - Permanent Stream
 - Transmission Line
 - Railway
 - Freeway
 - Highway
 - Major Road
 - Local Road
 - Approximate Groundwater Divide
 - Kames and Eskers
 - Moraine
 - Municipal Division
 - Waterbody
 - Cartographic Wetland
- Elevation (mASL)**
- High : 437
 - Low : 254

Basemapping from Ontario Ministry of Natural Resources



Highway 7/8 Transportation
Corridor Planning
and Class EA Study

Physiography

June 2008
Project 70347

